

PART OF N.W. 1/4 SEC. 23, T. 5N., R. 1W., S. L.B. & M.
UINTAH-HIGHLANDS SUBDIVISION NO. 3

230

LOTS 39-47
 IN WEBER COUNTY

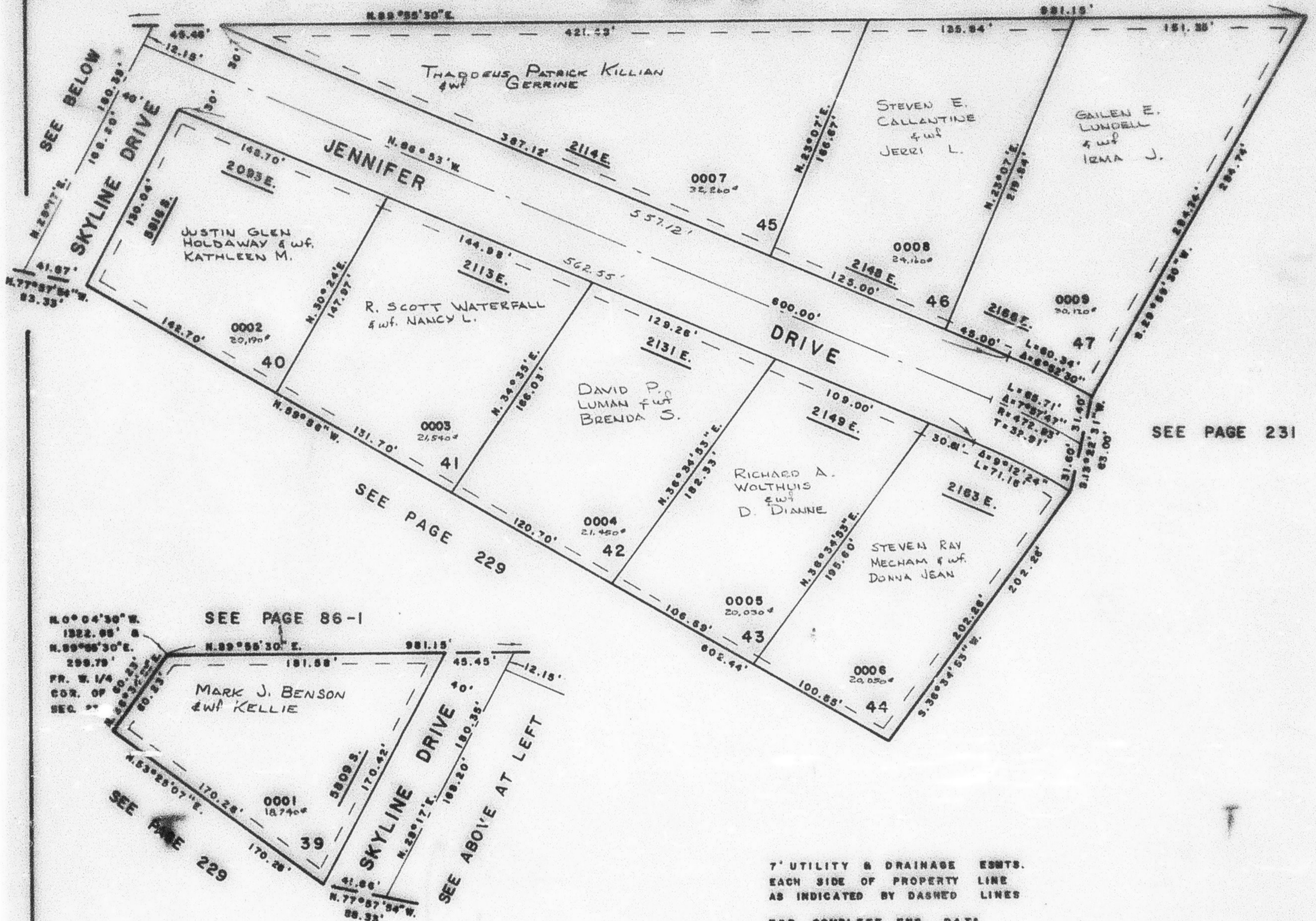
PREFIX 07-230

TAXING UNIT 100

SCALE 1" = 50'

EXCEPT WHERE OTHERWISE SHOWN
 ALL LOTS OWNED BY:
 MOUNTAINWEST SAVINGS & LOAN

SEE PAGE 86-1



7' UTILITY & DRAINAGE EASMTS.
 EACH SIDE OF PROPERTY LINE
 AS INDICATED BY DASHED LINES

FOR COMPLETE ENG. DATA
 SEE ORIG. DED. PLAT IN
 BOOK 21, PAGE 71

SEE PAGE 231